

## RING BLADE™ AIR WIPE

Blowoff, clean, cool and dry cable, pipe, extrusions, hose, wire and rope. Split design requires zero threading. Uniform 360 degree variable flow and force for temperatures up to 800°F (427°C)

### WHAT ARE THEY - REASONS TO USE

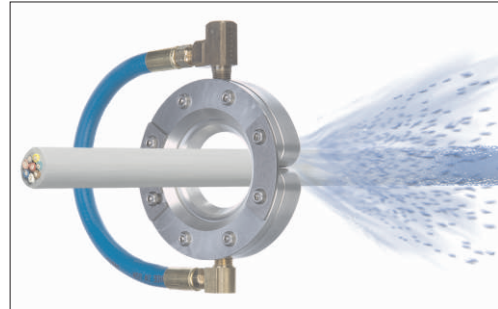
**Air Wipe Blowoff System** - Ring Blade™ from Nex Flow™ is easy to mount and maintain, and reduces both compressed air consumption and noise levels.

It produces a "laminar" flow of air along its 360° angle using the "Coanda" effect which "entrains" a large volume of air from the surrounding area along with the small amount of compressed air from the Ring Blade™ air-saver wiper-blade to produce an output flow up to 30 times.

The Ring Blade™ air wipe blowoff system payback on compressed air savings can be as short as a few weeks when compared to nozzle "rings" or simple annular slots used by other air wiping systems. Blowoff, cool, and clean products such as cable, pipe, wire and hose.

### RING BLADE™ AIR WIPE BLOWOFF SYSTEM BENEFITS:

- ▶ Longer life in difficult environments for aluminum models because of anodizing, 316L stainless models for high temperate and corrosive environments.
- ▶ Easy to install and maintain and allows removal of a continuous piece.
- ▶ Even blowoff around the part, light in weight and compact.
- ▶ Lower compressed air consumption than a ring of drilled pipe or ring of open jets and nozzles.
- ▶ Maintenance free with output easily controlled, safe to use.



### RING BLADE™ AIR WIPE BLOWOFF SYSTEM FEATURES:

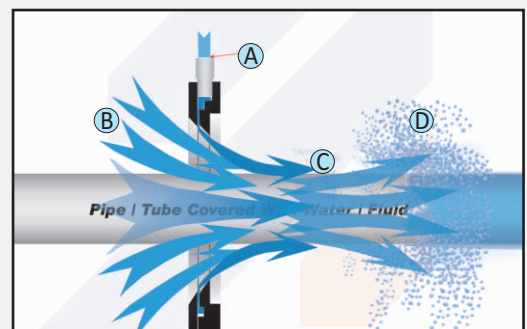
- ▶ No moving parts - anodized aluminum or 316L stainless steel
- ▶ Compact design, simple, lightweight and portable.
- ▶ Full flow Split Design - air across entire circumference of the Ring Blade™ Air Wipe. Designed as two pieces hinged together to open and close around the part.
- ▶ Driven by air not electricity.
- ▶ High airflow amplification.
- ▶ Instant on-off, no electricity or explosion hazard.

### RING BLADE™ AIR WIPE BLOWOFF SYSTEM APPLICATIONS:

- ▶ Blowoff of dust, liquid, contaminants and uniformly wipe surfaces.
- ▶ Dry after washing, plating or coating.
- ▶ Cool hot surfaces.
- ▶ Dry extruded profiles, plastic tubing, hose, wire, fiber optics, ribbon, strips.
- ▶ Prevent solution carryover and avoid cross contamination.
- ▶ Clean paint gun tips.
- ▶ Remove access water, coatings, oil.

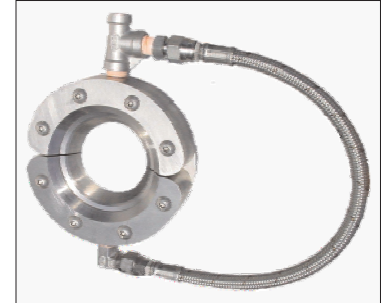
### RING BLADE™ AIR WIPE SYSTEM - HOW IT WORKS:

**Ring Blade™ Air Wipe** - Compressed air enters at point (A) into an annular chamber and throttled through a small ring nozzle at high velocity. This air stream clings to the "coanda" profile directing the air stream down toward the surface which is angled to create a "cone" style directed force to best clean, wipe and dry a surface. The surrounding air is entrained at point (B) creating an amplified 360 degree conical airflow at point (C) to uniformly wipe the surface of the of the material running through the Ring Blade™. The wet or dirty material (D) direction of travel is against the flow.



Ring Blade™ Air Wipe™ is available in eight standard sizes in anodized aluminum: ½" (12.7 mm), 1" (25.4 mm), 2" (50.8 mm), 3"(76mm), 4" (102 mm), 5" (127 mm), 6" (152 mm) and 7" (178 mm) (with brass fittings and special rubberized plastic hose for standard applications or with stainless steel hose for moderate temperatures up to 400 F (204 C). The 9" (229 mm) and 11: (279 mm) is available in anodized aluminum. No hose supplied. May be used for standard and moderate temperatures to 400 F (204 C). **Ring Blade™ Air Wipe™** also is available in eight sizes in 316L stainless steel: ½" (12.7 mm), 1" (25.4 mm), 2" (50.8 mm), 3" (76 mm), 4" (102 mm), 5" (127 mm), 6" (152 mm) and 7" (178 mm) with stainless steel fittings and hose for high temperatures up to 800 F (427 C) and for corrosive environments.

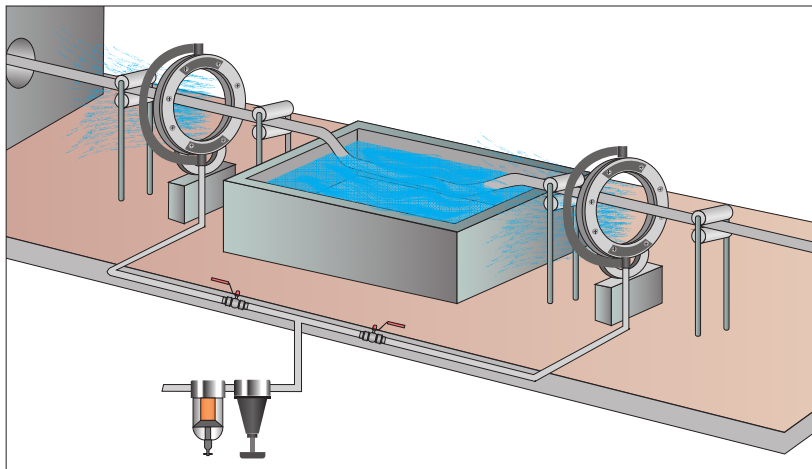
| STANDARD APPLICATIONS | X-STREAM™ MODERATE TEMP. TO 400°F (204°C) | 316L STAINLESS HIGH TEMP. TO 800°F (427°C) and CORROSIVE ENVIRONMENTS | A Inches (mm) | B Inches (mm)  | C Inches (mm) | Compressed Air Connection |
|-----------------------|---|---|---------------|----------------|---------------|---------------------------|
| 20000                 | 20000X                                    | 20000XS-316L  | 0.50" (12.7)  | 3.25" (82.6)   | 2.63" (66.8)  | 1/4" NPT                  |
| 20001                 | 20001X                                    | 20001XS-316L  | 1.00" (25.4)  | 3.75" (95.3)   | 3.00" (76.2)  | 1/4" NPT                  |
| 20002                 | 20002X                                    | 20002XS-316L  | 2.00" (50.8)  | 4.75" (121)    | 4.00" (102.6) | 1/4" NPT                  |
| 20003                 | 20003X                                    | 20003XS-316L  | 3.00" (76.2)  | 5.75" (146)    | 5.00" (127)   | 1/4" NPT                  |
| 20004                 | 20004X                                    | 20004XS-316L  | 4.00" (102.6) | 6.75" (171)    | 6.00" (153)   | 1/4" NPT                  |
| 20005                 | 20005X                                    | 20005XS-316L  | 5.00" (127.0) | 7.75" (197)    | 7.00" (178)   | 3/8" NPT                  |
| 20006                 | 20006X                                    | 20006XS-316L  | 6.00" (153)   | 8.75" (222)    | 8.00" (203)   | 3/8" NPT                  |
| 20007                 | 20007X                                    | 20007XS-316L  | 7.00" (178)   | 9.75" (248)    | 9.00" (229)   | 3/8" NPT                  |
|                       | 20009                                     |   | 9.00" (229)   | 11.75" (298.5) | 11.00" (279)  | 4x1/4" NPT                |
|                       | 20011                                     |   | 11.00" (279)  | 13.75" (349)   | 13.00" (330)  | 4x1/4" NPT                |



High Temperature 316L Stainless Steel Ring Blade™ c/w all stainless fittings and hose.

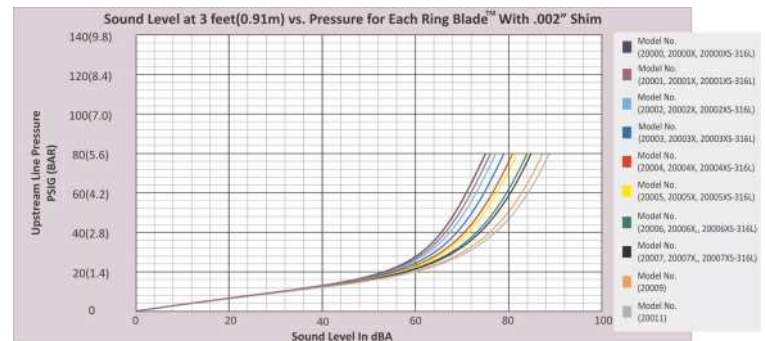
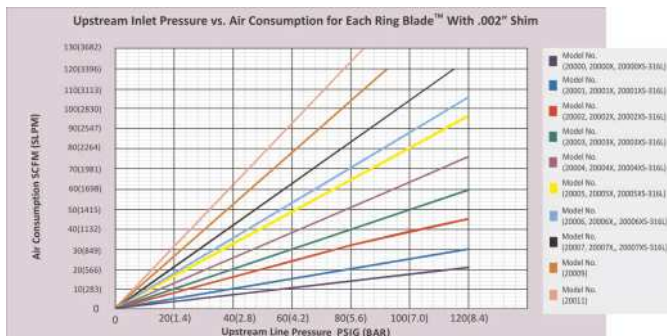


9" and 11" units have two air inlets per side.



Two Model 20002 - 2" Ring Blade™ Air Wipe system are used to clean and dry extruded automotive trim. The design of the air wipe allows the blowoff force to get into the automotive trim gaps and effectively clean and dry the extruded part. If a bubble occurs in the trim, the Ring Blade™ air wipe can be opened up to pass the bubble without disrupting production.

**RING BLADE™ AIR WIPE SYSTEM**



## ALUMINUM RING BLADE™ AIR WIPE SYSTEMS - UP TO 150°F (66°C)

| PART NO. | DESCRIPTION  |
|----------|--|
| 20000    | ½" Anodized Aluminum Ring Blade™ Air Wipe only   |
| 20001    | 1" Anodized Aluminum Ring Blade™ Air Wipe only   |
| 20002    | 2" Anodized Aluminum Ring Blade™ Air Wipe only   |
| 20003    | 3" Anodized Aluminum Ring Blade™ Air Wipe only   |
| 20004    | 4" Anodized Aluminum Ring Blade™ Air Wipe only   |
| 20005    | 5" Anodized Aluminum Ring Blade™ Air Wipe only   |
| 20006    | 6" Anodized Aluminum Ring Blade™ Air Wipe only   |
| 20007    | 7" Anodized Aluminum Ring Blade™ Air Wipe only   |
| 21000    | ½" Anodized Aluminum Ring Blade™ Air Wipe plus Filter with Auto Drain                        |
| 21001    | 1" Anodized Aluminum Ring Blade™ Air Wipe plus Filter with Auto Drain                        |
| 21002    | 2" Anodized Aluminum Ring Blade™ Air Wipe plus Filter with Auto Drain                        |
| 21003    | 3" Anodized Aluminum Ring Blade™ Air Wipe plus Filter with Auto Drain                        |
| 21004    | 4" Anodized Aluminum Ring Blade™ Air Wipe plus Filter with Auto Drain                        |
| 21005    | 5" Anodized Aluminum Ring Blade™ Air Wipe plus Filter with Auto Drain                        |
| 21006    | 6" Anodized Aluminum Ring Blade™ Air Wipe plus Filter with Auto Drain                        |
| 21007    | 7" Anodized Aluminum Ring Blade™ Air Wipe plus Filter with Auto Drain                        |
| 22000    | ½" Anodized Aluminum Ring Blade™ Air Wipe plus Filter with Auto Drain & Regulator with Gauge |
| 22001    | 1" Anodized Aluminum Ring Blade™ Air Wipe plus Filter with Auto Drain & Regulator with Gauge |
| 22002    | 2" Anodized Aluminum Ring Blade™ Air Wipe plus Filter with Auto Drain & Regulator with Gauge |
| 22003    | 3" Anodized Aluminum Ring Blade™ Air Wipe plus Filter with Auto Drain & Regulator with Gauge |
| 22004    | 4" Anodized Aluminum Ring Blade™ Air Wipe plus Filter with Auto Drain & Regulator with Gauge |
| 22005    | 5" Anodized Aluminum Ring Blade™ Air Wipe plus Filter with Auto Drain & Regulator with Gauge |
| 22006    | 6" Anodized Aluminum Ring Blade™ Air Wipe plus Filter with Auto Drain & Regulator with Gauge |
| 22007    | 7" Anodized Aluminum Ring Blade™ Air Wipe plus Filter with Auto Drain & Regulator with Gauge |

## ALUMINUM RING BLADE™ AIR WIPE SYSTEMS - UP TO 400°F (204°C)

| PART NO. | DESCRIPTION  |
|----------|--|
| 20000X   | ½" Medium Temperature Anodized Aluminum Ring Blade™ Air Wipe only  |
| 20001X   | 1" Medium Temperature Anodized Aluminum Ring Blade™ Air Wipe only  |
| 20002X   | 2" Medium Temperature Anodized Aluminum Ring Blade™ Air Wipe only  |
| 20003X   | 3" Medium Temperature Anodized Aluminum Ring Blade™ Air Wipe only  |
| 20004X   | 4" Medium Temperature Anodized Aluminum Ring Blade™ Air Wipe only  |
| 20005X   | 5" Medium Temperature Anodized Aluminum Ring Blade™ Air Wipe only  |
| 20006X   | 6" Medium Temperature Anodized Aluminum Ring Blade™ Air Wipe only  |
| 20007X   | 7" Medium Temperature Anodized Aluminum Ring Blade™ Air Wipe only  |
| 21000X   | ½" Medium Temperature Anodized Aluminum Ring Blade™ Air Wipe plus Filter with Auto Drain                 |
| 21001X   | 1" Medium Temperature Anodized Aluminum Ring Blade™ Air Wipe plus Filter with Auto Drain                 |
| 21002X   | 2" Medium Temperature Anodized Aluminum Ring Blade™ Air Wipe plus Filter with Auto Drain                 |
| 21003X   | 3" Medium Temperature Anodized Aluminum Ring Blade™ Air Wipe plus Filter with Auto Drain                 |
| 21004X   | 4" Medium Temperature Anodized Aluminum Ring Blade™ Air Wipe plus Filter with Auto Drain                 |
| 21005X   | 5" Medium Temperature Anodized Aluminum Ring Blade™ Air Wipe plus Filter with Auto Drain                 |
| 21006X   | 6" Medium Temperature Anodized Aluminum Ring Blade™ Air Wipe plus Filter with Auto Drain                 |
| 21007X   | 7" Medium Temperature Anodized Aluminum Ring Blade™ Air Wipe plus Filter with Auto Drain                 |
| 22000X   | ½" Medium Temperature Anodized Aluminum Ring Blade™ Air Wipe + Filter with Auto Drain & Reg. with Gauge  |
| 22001X   | 1" Medium Temperature Anodized Aluminum Ring Blade™ Air Wipe + Filter with Auto Drain & Reg. with Gauge  |
| 22002X   | 2" Medium Temperature Anodized Aluminum Ring Blade™ Air Wipe + Filter with Auto Drain & Reg. with Gauge  |
| 22003X   | 3" Medium Temperature Anodized Aluminum Ring Blade™ Air Wipe + Filter with Auto Drain & Reg. with Gauge  |
| 22004X   | 4" Medium Temperature Anodized Aluminum Ring Blade™ Air Wipe + Filter with Auto Drain & Reg. with Gauge  |
| 22005X   | 5" Medium Temperature Anodized Aluminum Ring Blade™ Air Wipe + Filter with Auto Drain & Reg. with Gauge  |
| 22006X   | 6" Medium Temperature Anodized Aluminum Ring Blade™ Air Wipe + Filter with Auto Drain & Reg. with Gauge  |
| 22007X   | 7" Medium Temperature Anodized Aluminum Ring Blade™ Air Wipe + Filter with Auto Drain & Reg. with Gauge  |
| 20009    | 9" Medium Temperature Anodized Aluminum Ring Blade™ Air Wipe Only  |
| 20011    | 11" Medium Temperature Anodized Aluminum Ring Blade™ Air Wipe Only                                       |
| 21009    | 9" Medium Temperature Anodized Aluminum Ring Blade™ Air Wipe + Filter with Auto Drain                    |
| 21011    | 11" Medium Temperature Anodized Aluminum Ring Blade™ Air Wipe + Filter with Auto Drain                   |
| 22009    | 9" Medium Temperature Anodized Aluminum Ring Blade™ Air Wipe + Filter with Auto Drain & Reg. with Gauge  |
| 22011    | 11" Medium Temperature Anodized Aluminum Ring Blade™ Air Wipe + Filter with Auto Drain & Reg. with Gauge |





**EXTRA STAINLESS STEEL SHIMS - .002" (.050 MM) FOR RING BLADE™ AIR WIPE SYSTEMS**

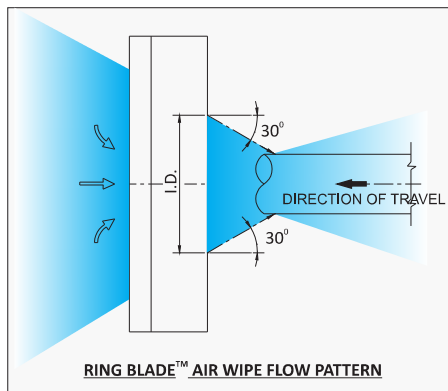
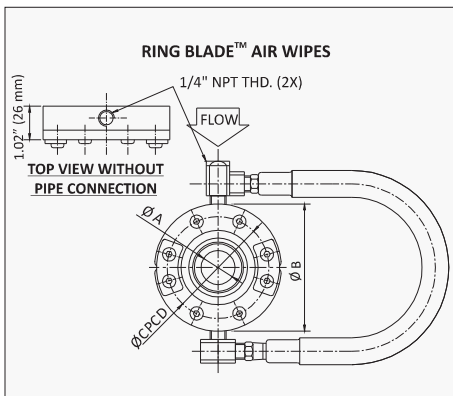
| PART NO. | DESCRIPTION  |
|----------|--|
| 20100    | ½" Stainless Steel Shim - .002" (.050 mm) for ½" Ring Blade™ Air Wipe System   |
| 20101    | 1" Stainless Steel Shim - .002" (.050 mm) for 1" Ring Blade™ Air Wipe System   |
| 20102    | 2" Stainless Steel Shim - .002" (.050 mm) for 2" Ring Blade™ Air Wipe System   |
| 20103    | 3" Stainless Steel Shim - .002" (.050 mm) for 3" Ring Blade™ Air Wipe System   |
| 20104    | 4" Stainless Steel Shim - .002" (.050 mm) for 4" Ring Blade™ Air Wipe System   |
| 20105    | 5" Stainless Steel Shim - .002" (.050 mm) for 5" Ring Blade™ Air Wipe System   |
| 20106    | 6" Stainless Steel Shim - .002" (.050 mm) for 6" Ring Blade™ Air Wipe System   |
| 20107    | 7" Stainless Steel Shim - .002" (.050 mm) for 7" Ring Blade™ Air Wipe System   |
| 20109    | 9" Stainless Steel Shim - .002" (.050 mm) for 9" Ring Blade™ Air Wipe System   |
| 20111    | 11" Stainless Steel Shim - .002" (.050 mm) for 11" Ring Blade™ Air Wipe System |

**STAINLESS STEEL RING BLADE™ AIR WIPE SYSTEMS - UP TO 800°F (427°C)**

| PART NO.     | DESCRIPTION  |
|--------------|--|
| 2000XS-316L  | ½" High Temperature 316L Stainless Steel Ring Blade™ Air Wipe only                                       |
| 20001XS-316L | 1" High Temperature 316L Stainless Steel Ring Blade™ Air Wipe only                                       |
| 20002XS-316L | 2" High Temperature 316L Stainless Steel Ring Blade™ Air Wipe only                                       |
| 20003XS-316L | 3" High Temperature 316L Stainless Steel Ring Blade™ Air Wipe only                                       |
| 20004XS-316L | 4" High Temperature 316L Stainless Steel Ring Blade™ Air Wipe only                                       |
| 20005XS-316L | 5" High Temperature 316L Stainless Steel Ring Blade™ Air Wipe only                                       |
| 20006XS-316L | 6" High Temperature 316L Stainless Steel Ring Blade™ Air Wipe only                                       |
| 20007XS-316L | 7" High Temperature 316L Stainless Steel Ring Blade™ Air Wipe only                                       |
| 21000XS-316L | ½" High Temperature 316L Stainless Steel Ring Blade™ Air Wipe plus Filter with Auto Drain                |
| 21001XS-316L | 1" High Temperature 316L Stainless Steel Ring Blade™ Air Wipe plus Filter with Auto Drain                |
| 21002XS-316L | 2" High Temperature 316L Stainless Steel Ring Blade™ Air Wipe plus Filter with Auto Drain                |
| 21003XS-316L | 3" High Temperature 316L Stainless Steel Ring Blade™ Air Wipe plus Filter with Auto Drain                |
| 21004XS-316L | 4" High Temperature 316L Stainless Steel Ring Blade™ Air Wipe plus Filter with Auto Drain                |
| 21005XS-316L | 5" High Temperature 316L Stainless Steel Ring Blade™ Air Wipe plus Filter with Auto Drain                |
| 21006XS-316L | 6" High Temperature 316L Stainless Steel Ring Blade™ Air Wipe plus Filter with Auto Drain                |
| 21007XS-316L | 7" High Temperature 316L Stainless Steel Ring Blade™ Air Wipe plus Filter with Auto Drain                |
| 22000XS-316L | ½" High Temperature 316L Stainless Steel Ring Blade™ Air Wipe + Filter with Auto Drain & Reg. with Gauge |
| 22001XS-316L | 1" High Temperature 316L Stainless Steel Ring Blade™ Air Wipe + Filter with Auto Drain & Reg. with Gauge |
| 22002XS-316L | 2" High Temperature 316L Stainless Steel Ring Blade™ Air Wipe + Filter with Auto Drain & Reg. with Gauge |
| 22003XS-316L | 3" High Temperature 316L Stainless Steel Ring Blade™ Air Wipe + Filter with Auto Drain & Reg. with Gauge |
| 22004XS-316L | 4" High Temperature 316L Stainless Steel Ring Blade™ Air Wipe + Filter with Auto Drain & Reg. with Gauge |
| 22005XS-316L | 5" High Temperature 316L Stainless Steel Ring Blade™ Air Wipe + Filter with Auto Drain & Reg. with Gauge |
| 22006XS-316L | 6" High Temperature 316L Stainless Steel Ring Blade™ Air Wipe + Filter with Auto Drain & Reg. with Gauge |
| 22007XS-316L | 7" High Temperature 316L Stainless Steel Ring Blade™ Air Wipe + Filter with Auto Drain & Reg. with Gauge |

**EXTRA 316L STAINLESS STEEL SHIMS - .002" (.050 MM) FOR STAINLESS RING BLADE™ AIR WIPE SYSTEMS**

| PART NO.          | DESCRIPTION  |
|-------------------|--|
| 20100-316L SYSTEM | ½" 316L Stainless Steel Shim - .002" (.050 mm) for ½" 316L Stainless Ring Blade™ Air Wipe System |
| 20101-316L SYSTEM | 1" 316L Stainless Steel Shim - .002" (.050 mm) for 1" 316L Stainless Ring Blade™ Air Wipe System |
| 20102-316L SYSTEM | 2" 316L Stainless Steel Shim - .002" (.050 mm) for 2" 316L Stainless Ring Blade™ Air Wipe System |
| 20103-316L SYSTEM | 3" 316L Stainless Steel Shim - .002" (.050 mm) for 3" 316L Stainless Ring Blade™ Air Wipe System |
| 20104-316L SYSTEM | 4" 316L Stainless Steel Shim - .002" (.050 mm) for 4" 316L Stainless Ring Blade™ Air Wipe System |
| 20105-316L SYSTEM | 5" 316L Stainless Steel Shim - .002" (.050 mm) for 5" 316L Stainless Ring Blade™ Air Wipe System |
| 20107-316L SYSTEM | 7" 316L Stainless Steel Shim - .002" (.050 mm) for 7" 316L Stainless Ring Blade™ Air Wipe System |



**RING BLADE™ AIR WIPE SYSTEM**

